

Cannot open file P:\PEZ_2710\HW\ALTUM\Aquarius\BMP\MKLogo.bmp		Title: *	
Drawn: *	Number: 2	Rev: *	
Checked: *	Date: 21-10-2008	Sheet: 2 of: 23	
File: P:\QUA_2475\Tester\HWSCH\Power.SchDoc			

A

A

B

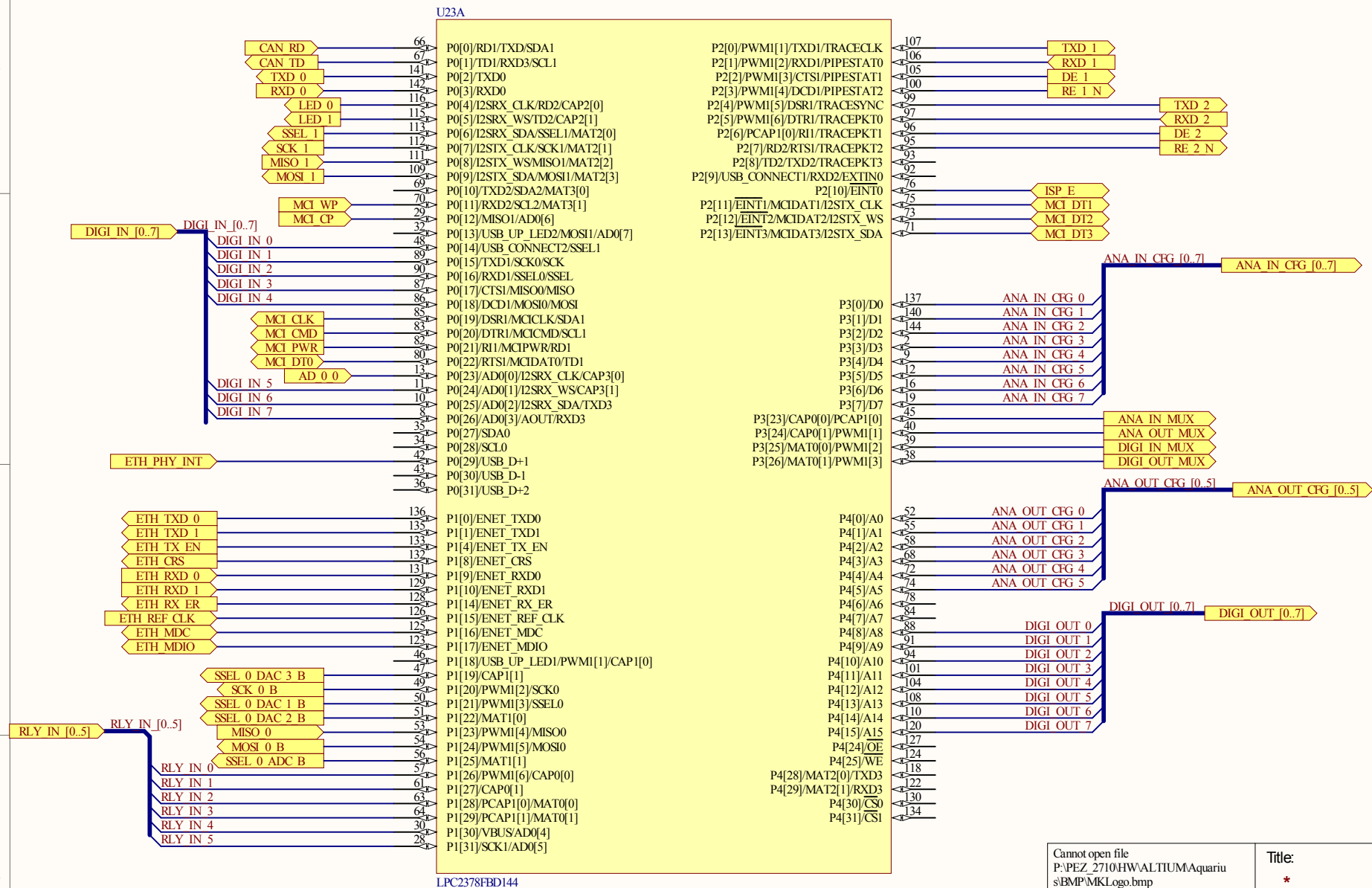
B

C

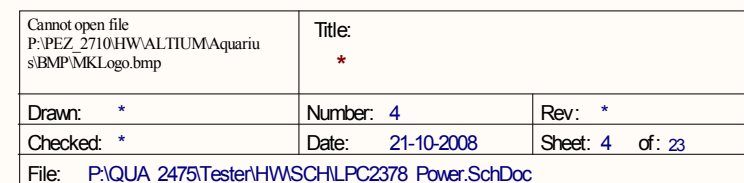
C

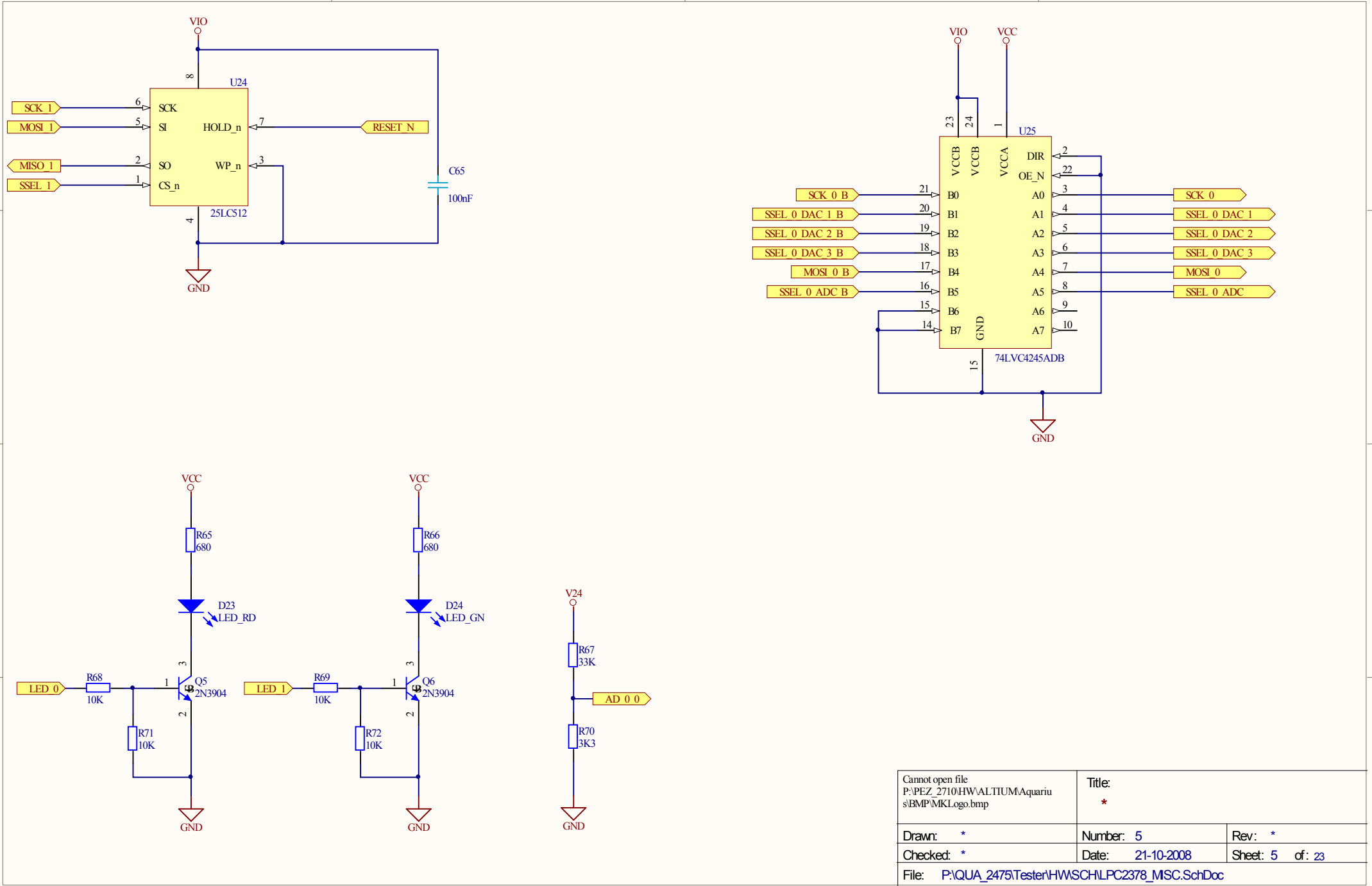
D

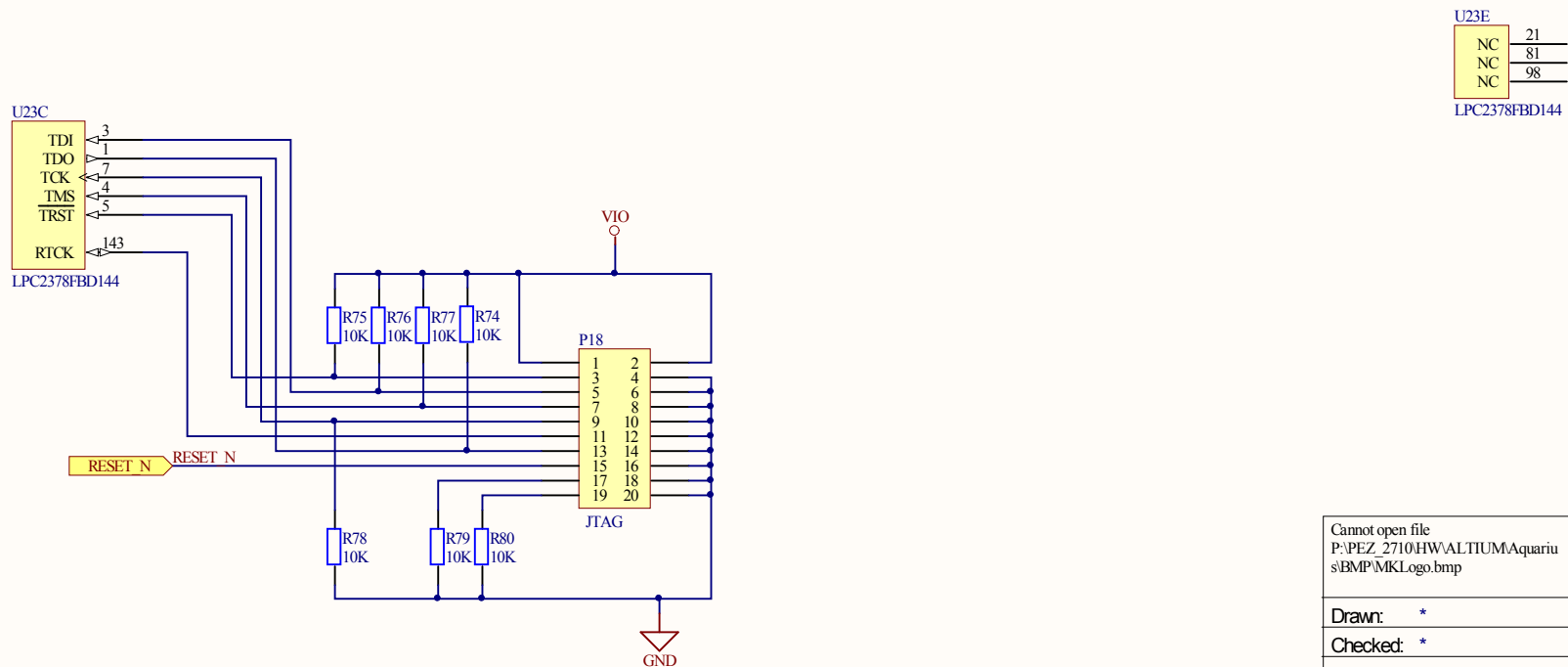
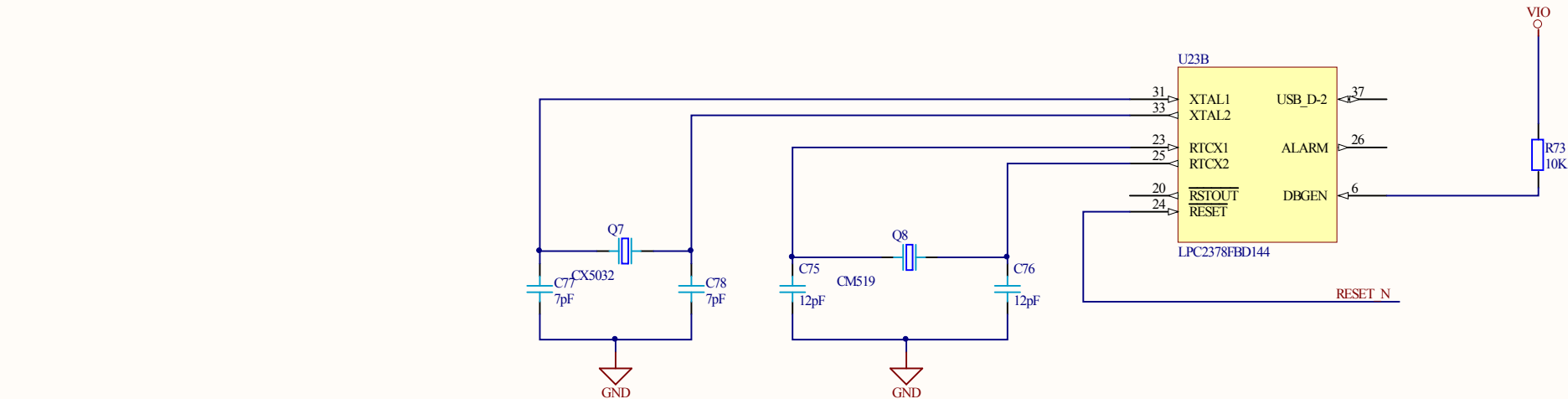
D



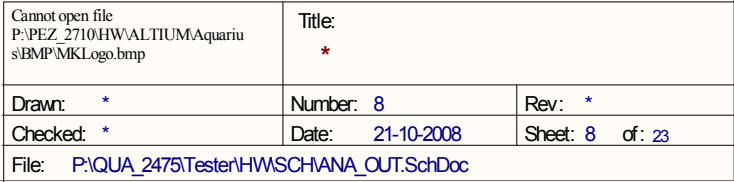
Cannot open file P:\PEZ_2710\HW\ALTUM\Aquariu s\BMP\MKLLogo.bmp	Title: *		
Drawn: *	Number: 3	Rev: *	
Checked: *	Date: 21-10-2008	Sheet: 3	of: 23
File: P:\QUA_2475\Tester\HWSCHLPC2378 IO.SchDoc			

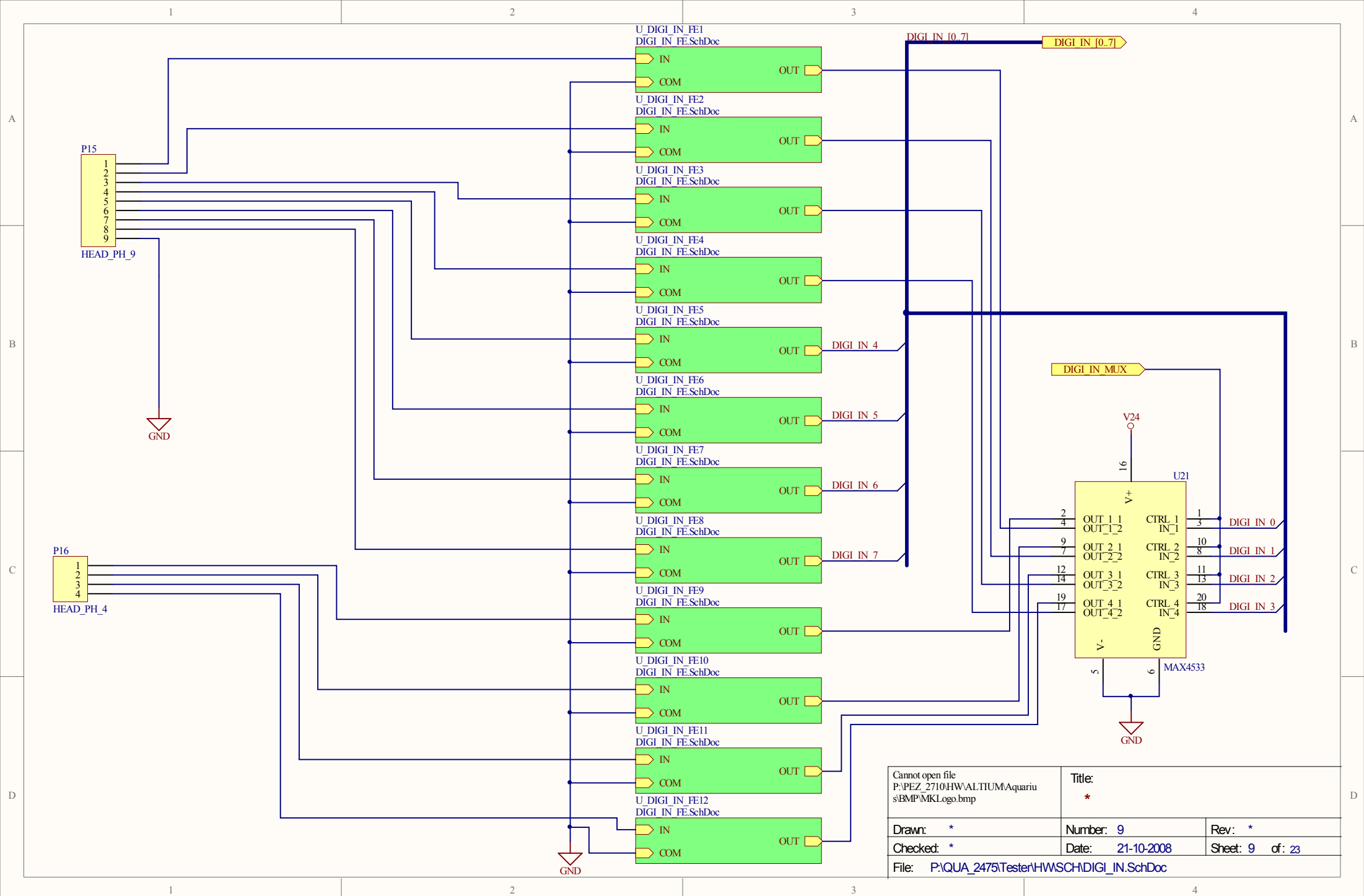




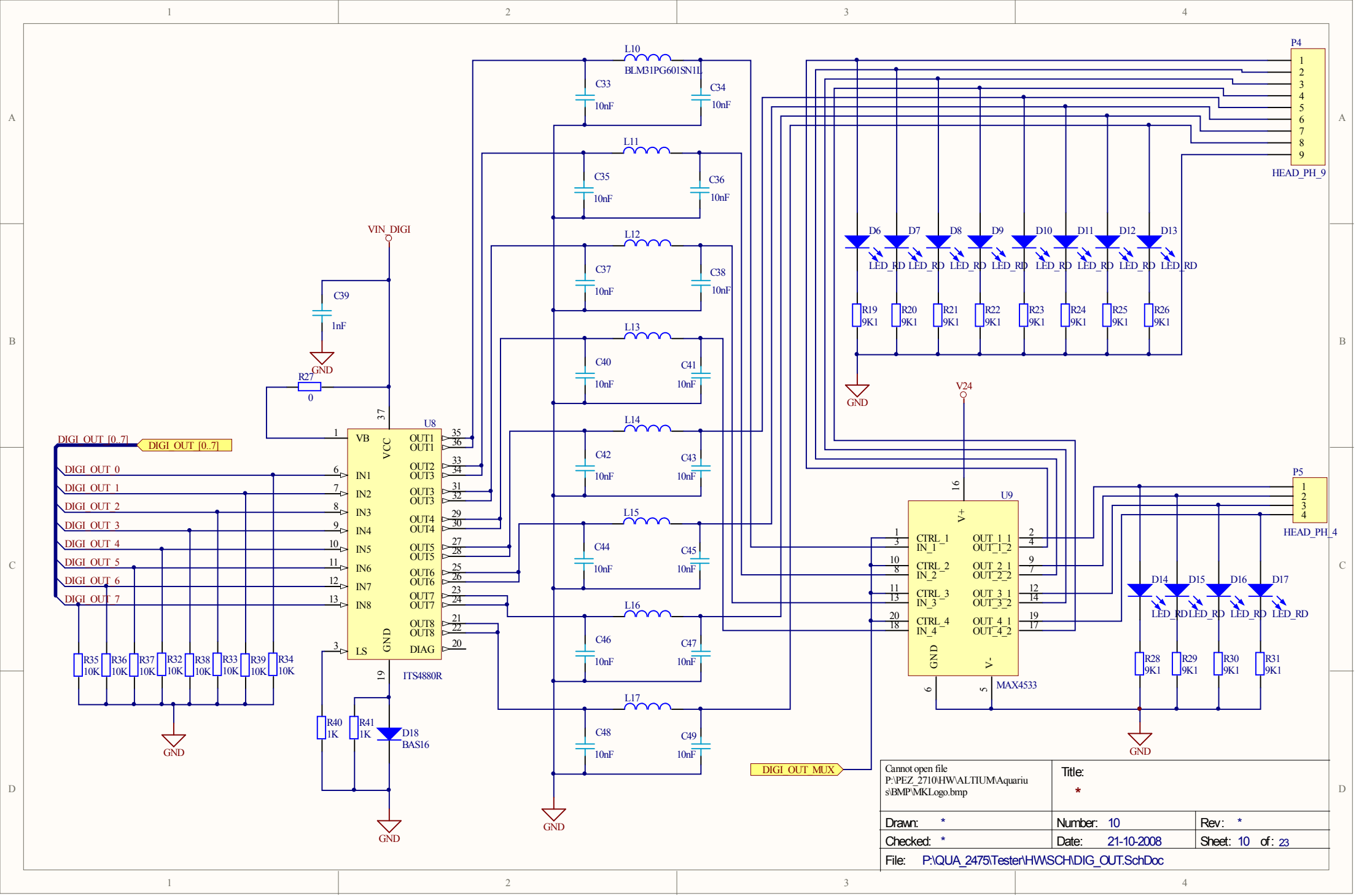


Cannot open file P:\PEZ_2710\HW\ALTUM\Aquariu s\BMP\MKLogo.bmp		Title: *	
Drawn: *	Number: 6	Rev: *	
Checked: *	Date: 21-10-2008	Sheet: 6	of: 23
File: P:\QUA_2475\Tester\HWSCHLPC2378_SYS.SchDoc			





Cannot open file P:\PEZ_2710\HW\ALTUM\Aquariu s\BMP\MKLogo.bmp		Title: *	
Drawn: *	Number: 9	Rev: *	
Checked: *	Date: 21-10-2008	Sheet: 9 of 23	
File: P:\QUA_2475\Tester\HWSCH\DIGI_IN.SchDoc			



A

B

C

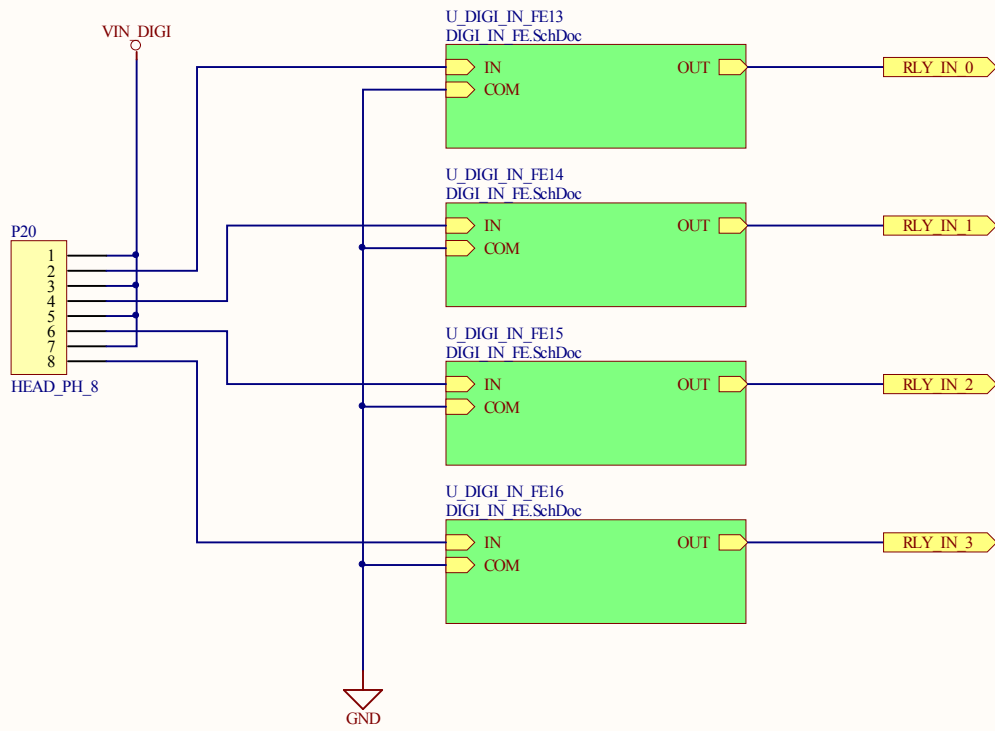
D

A

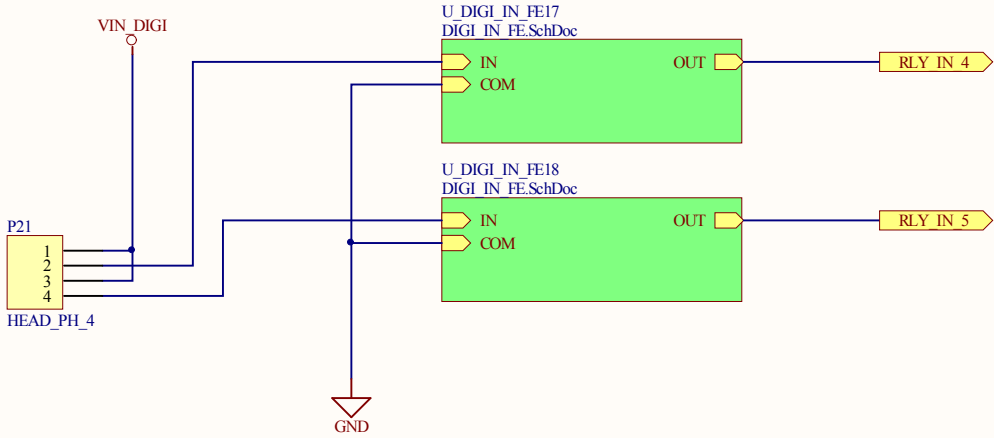
B

C

D



Cannot open file P:\PEZ_2710\HW\ALTUM\Aquariu s\BMP\MKLogo.bmp		Title: *	
Drawn: *	Number: 11	Rev: *	
Checked: *	Date: 21-10-2008	Sheet: 11 of: 23	
File: P:\QUA_2475\Tester\HWSCHRLY_IN.SchDoc			



Cannot open file P:\PEZ_2710\HW\ALTUM\Aquariu s\BMP\MKLogo.bmp		Title: ★	
Drawn: MM	Number: 12	Rev: A	
Checked: MMJ	Date: 21-10-2008	Sheet: 12 of: 23	
File: P:\QUA_2475\Tester\HWSCHRLRY_IN_EB.SchDoc			

A

B

C

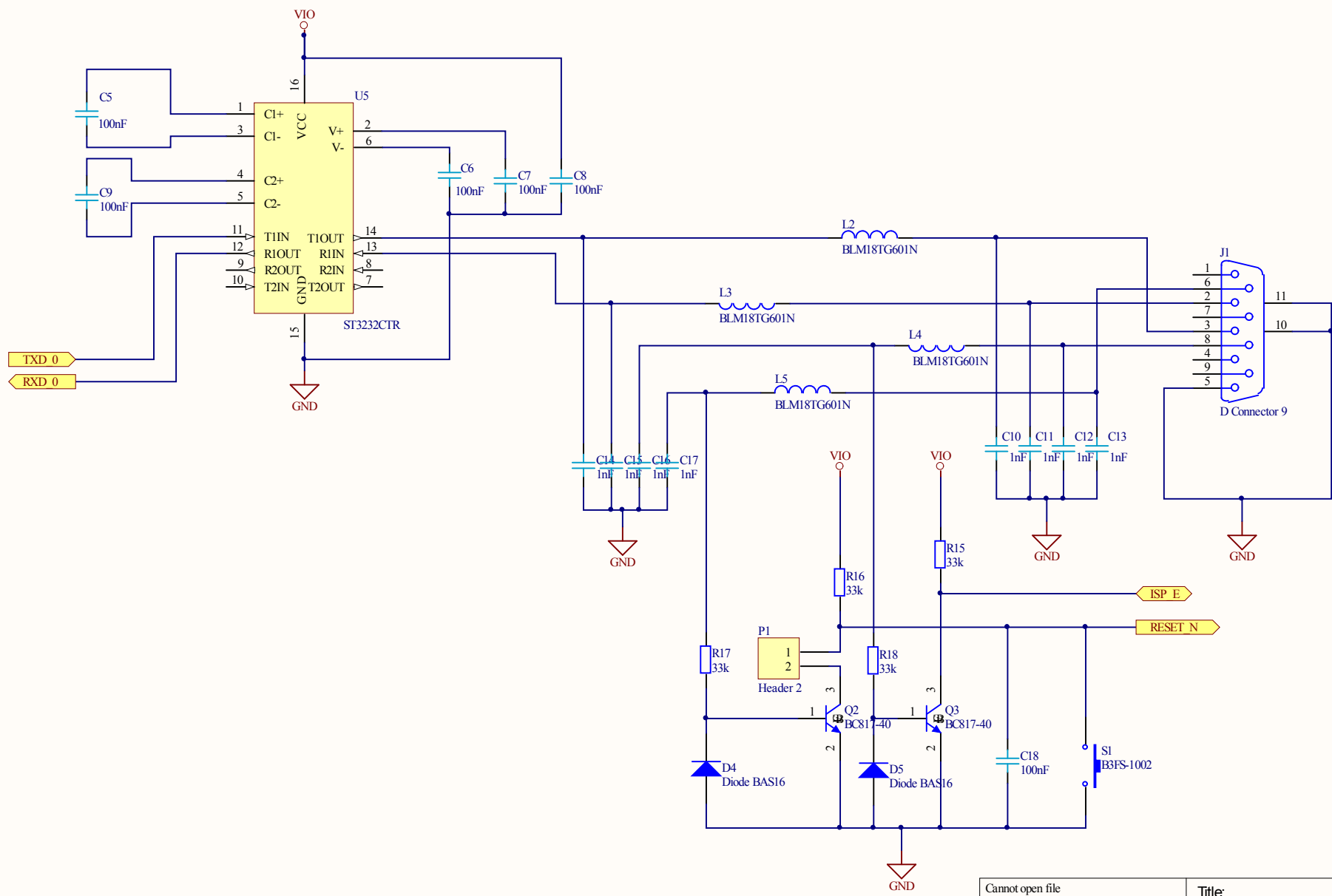
D

A

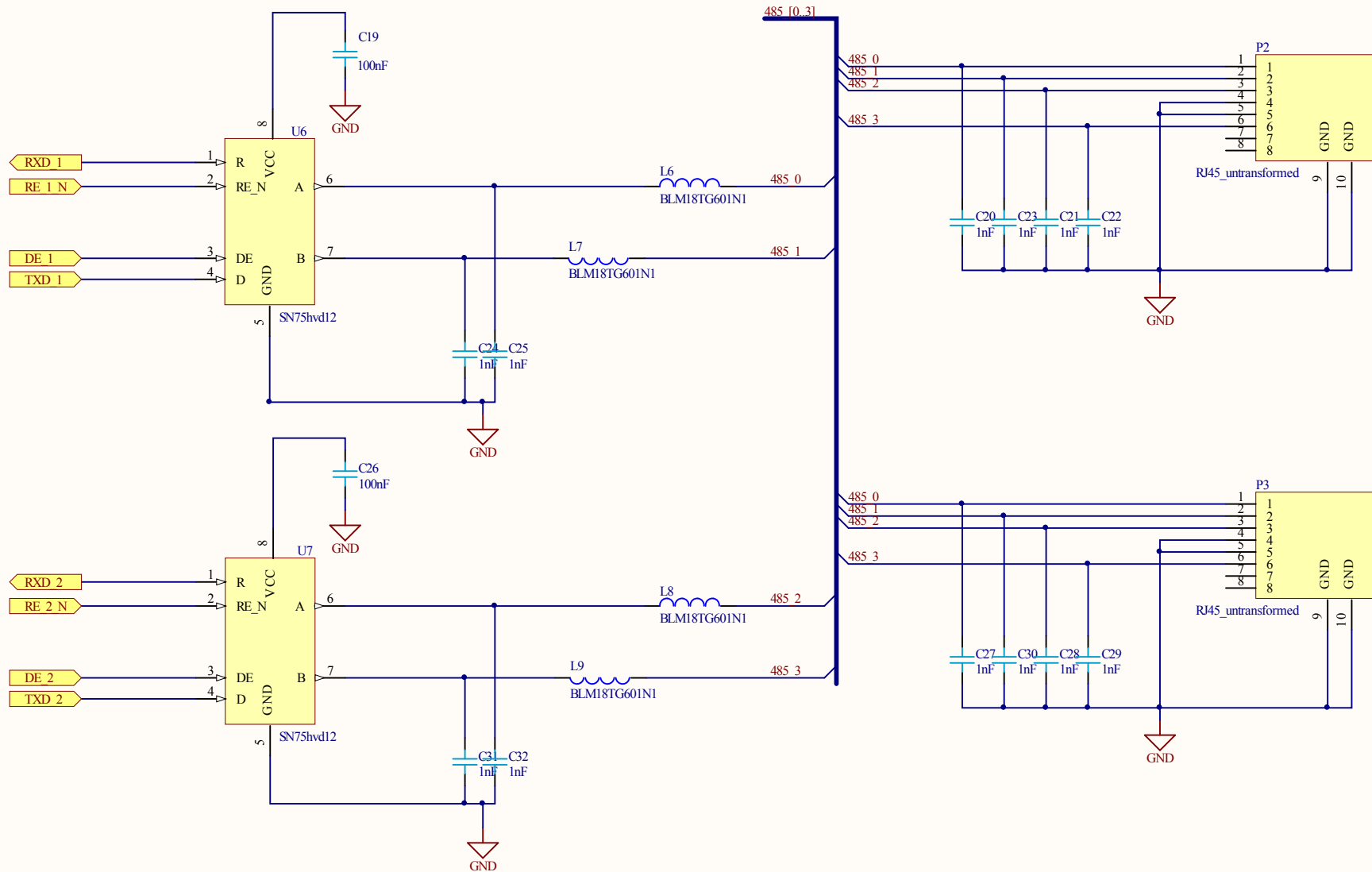
B

C

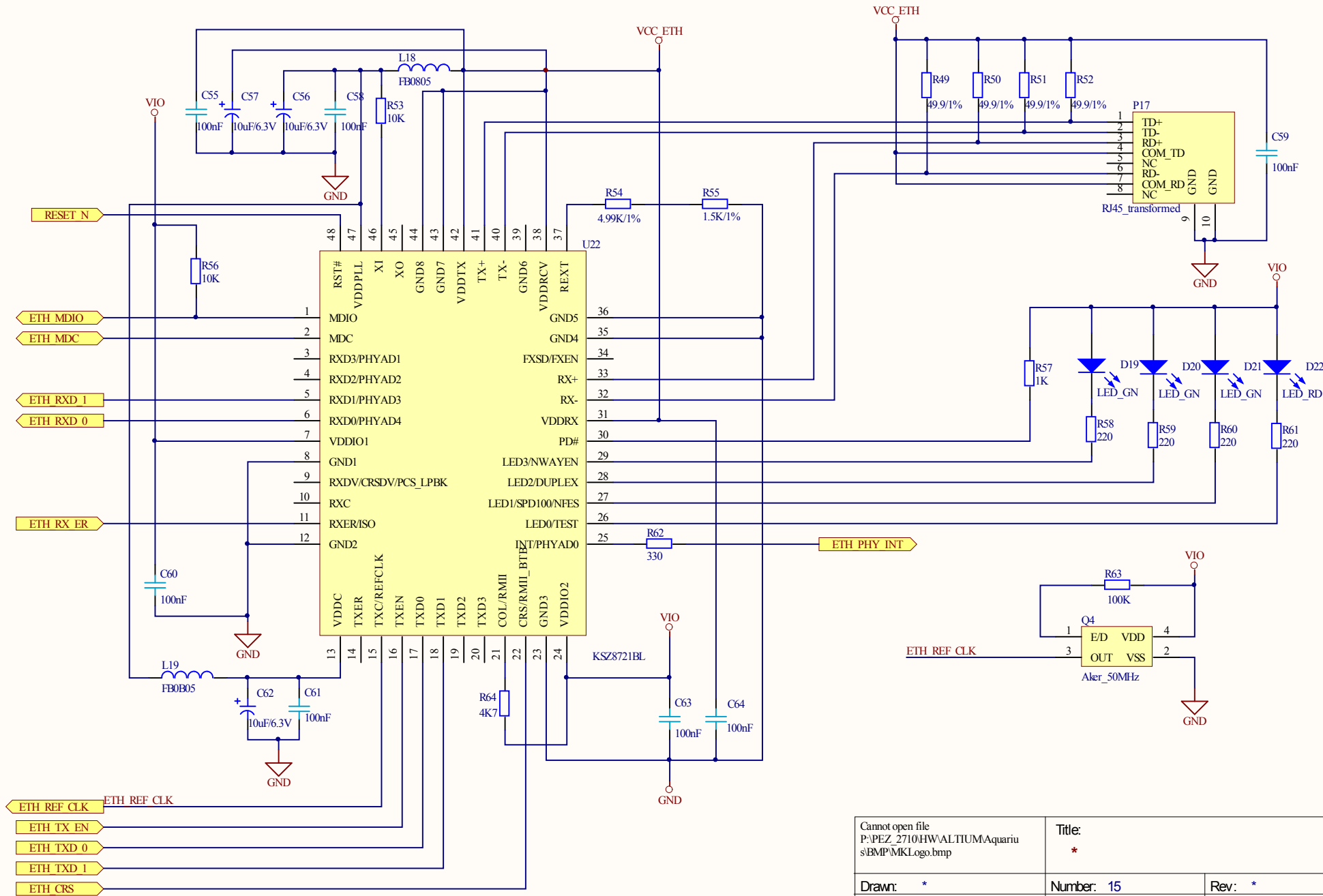
D



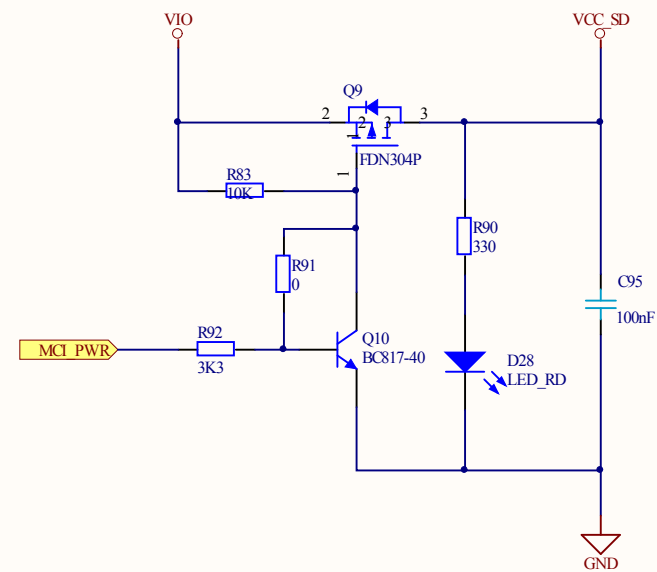
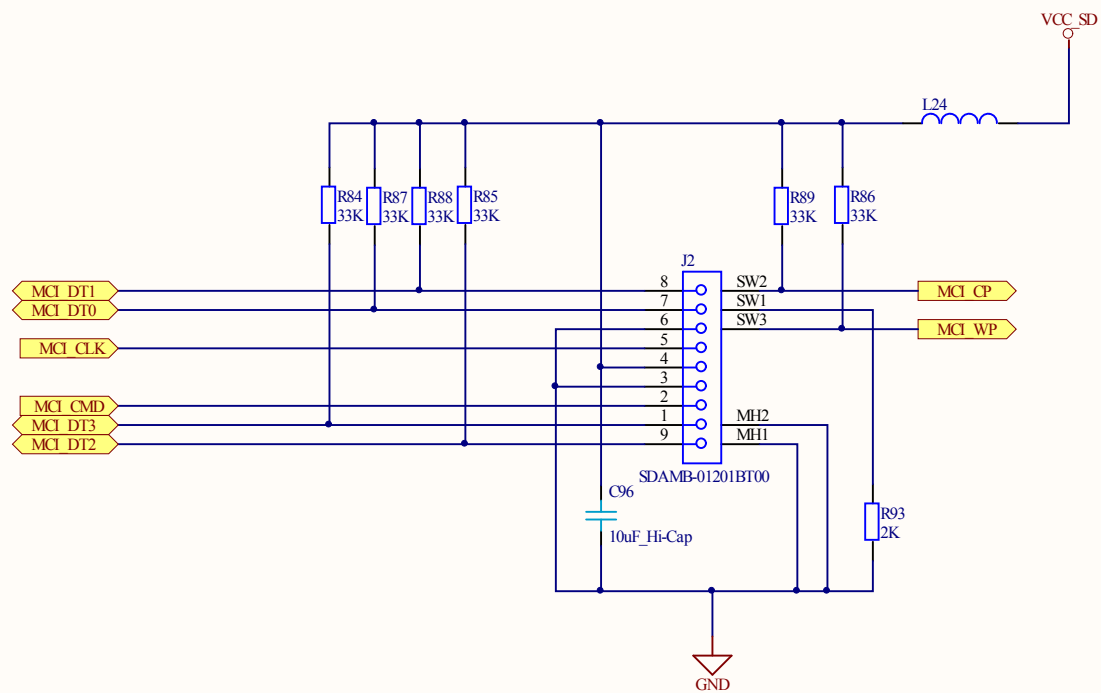
Cannot open file P:\PEZ_2710\HW\ALTUM\Aquariu s\BMP\MKLogo.bmp		Title: *	
Drawn: *	Number: 13	Rev: *	
Checked: *	Date: 21-10-2008	Sheet: 13 of: 23	
File: P:\QUA_2475\Tester\HWSCHRS232.SchDoc			



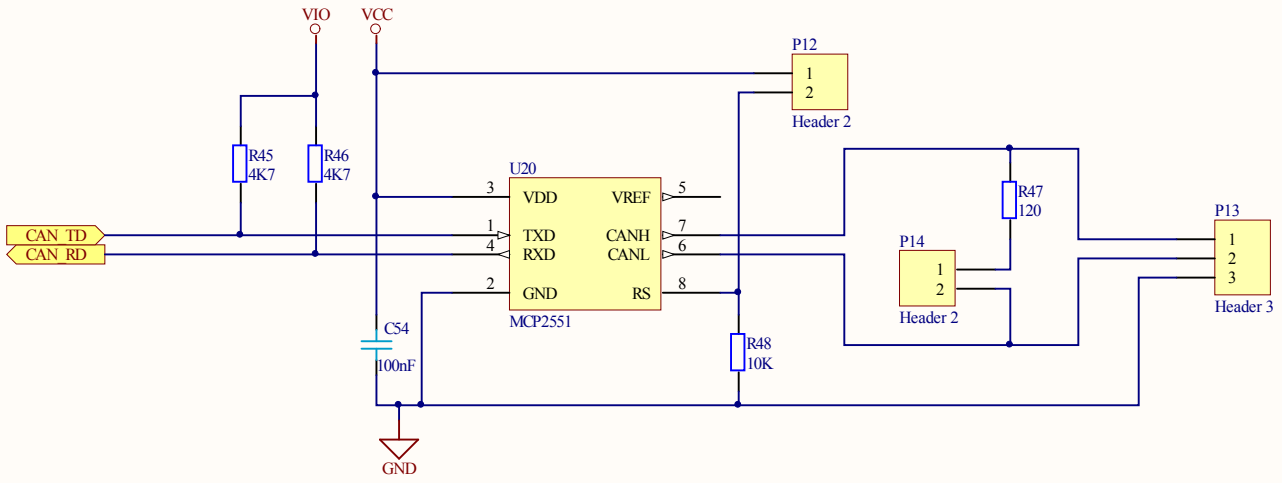
Cannot open file P:\PEZ_2710\HW\ALTUM\Aquariu s\BMP\MKLogo.bmp		Title: *	
Drawn: *		Number: 14	Rev: *
Checked: *		Date: 21-10-2008	Sheet: 14 of: 23
File: P:\QUA_2475\Tester\HWSCHRS485.SchDoc			



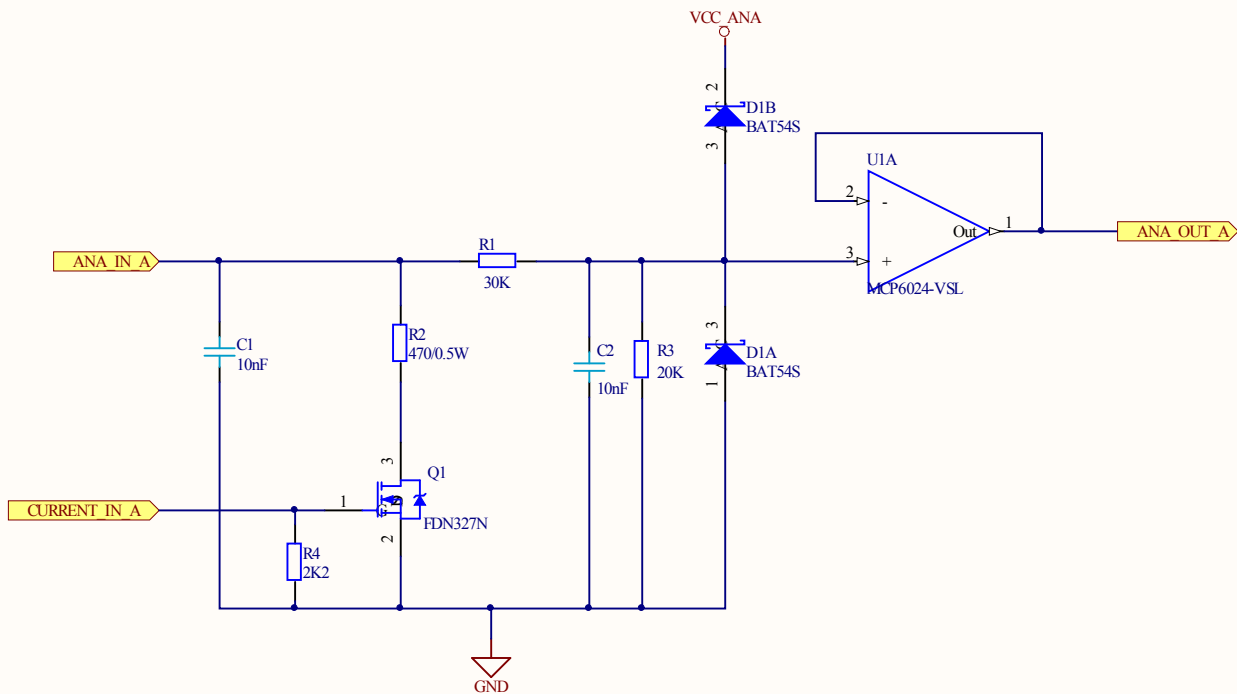
Cannot open file P:\PEZ_2710\HW\ALTUM\Aquarius\BMP\MKLogo.bmp		Title: *	
Drawn: *	Number: 15	Rev: *	
Checked: *	Date: 21-10-2008	Sheet: 15 of: 23	
File: P:\QUA_2475\Tester\HWSCH\Ethernet.SchDoc			



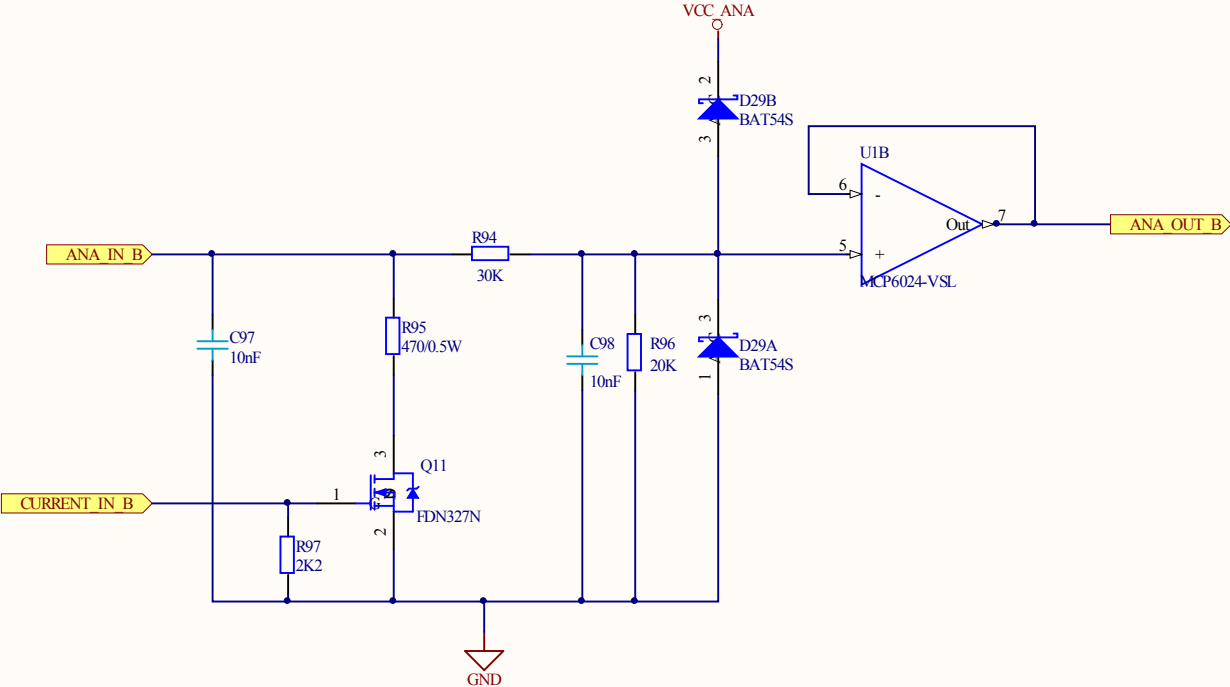
Cannot open file P:\PEZ_2710\HW\ALTUM\Aquariu s\BMP\MKLogo.bmp		Title: *	
Drawn: *	Number: 16	Rev: *	
Checked: *	Date: 21-10-2008	Sheet: 16 of: 23	
File: P:\QUA_2475\Tester\HWSCH\SD_CARD.SchDoc			



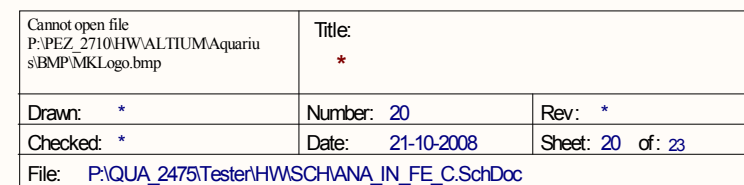
Cannot open file P:\PEZ_2710\HW\ALTUM\Aquariu s\BMP\MKLogo.bmp		Title: *	
Drawn: *	Number: 17	Rev: *	
Checked: *	Date: 21-10-2008	Sheet: 17 of: 23	
File: P:\QUA_2475\Tester\HWSCH\CAN.SchDoc			

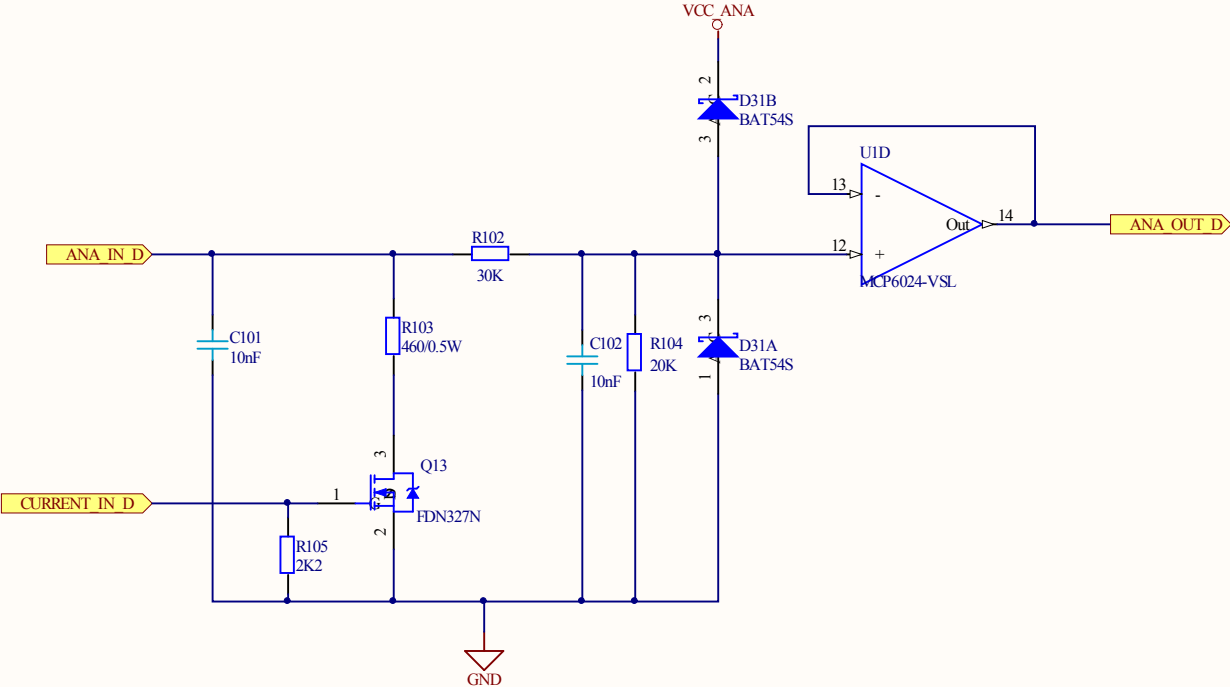


Cannot open file P:\PEZ_2710\HW\ALTUM\Aquarius\BMP\MKLogo.bmp		Title: *	
Drawn: *	Number: 18	Rev: *	
Checked: *	Date: 21-10-2008	Sheet: 18 of: 23	
File: P:\QUA_2475\Tester\HWSCH\ANA_IN_FE.SchDoc			

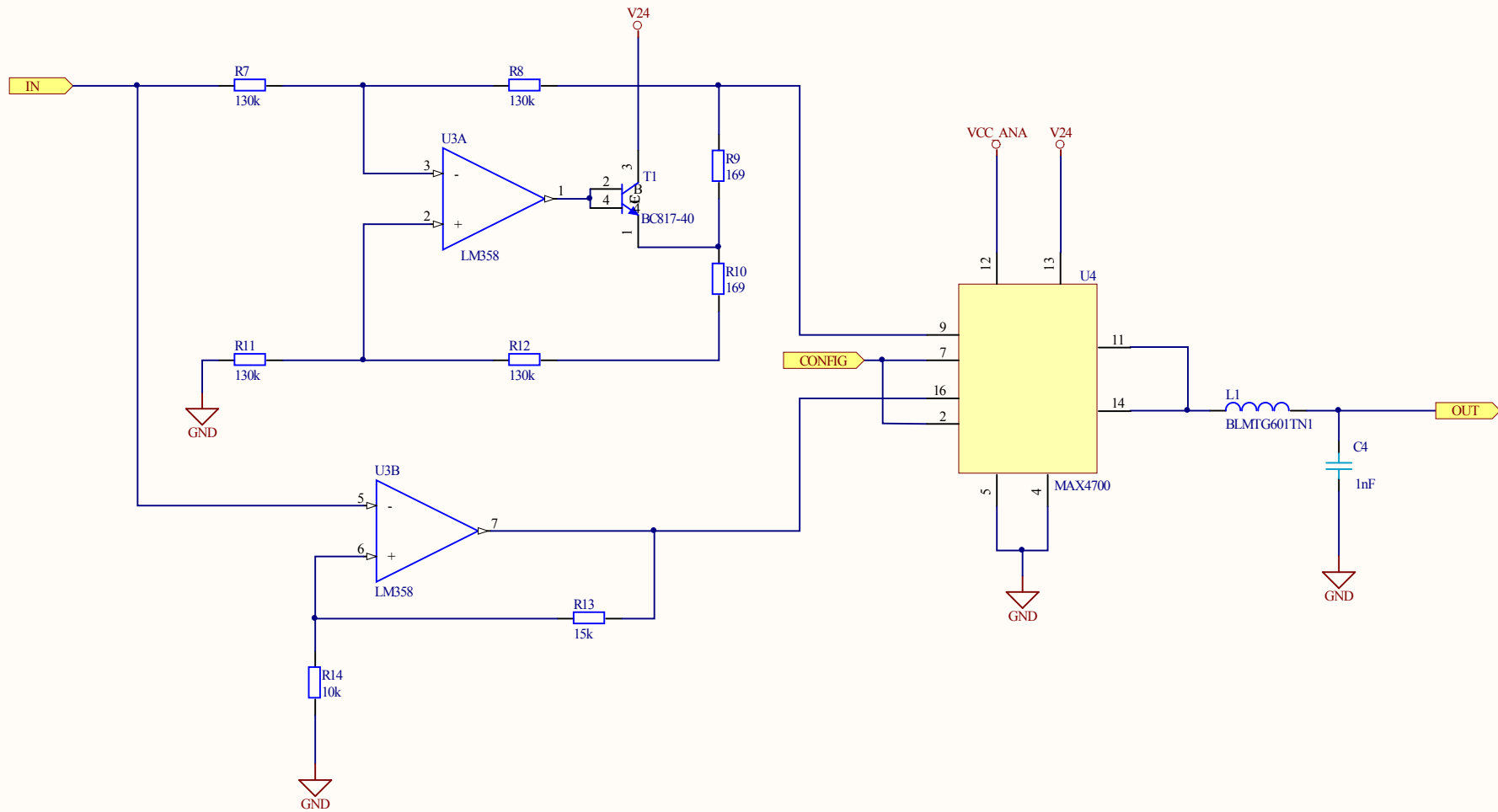


Cannot open file P:\PEZ_2710\HW\ALTITUM\Aquarius\BMP\MKLogo.bmp		Title: *	
Drawn: *	Number: 19	Rev: *	
Checked: *	Date: 21-10-2008	Sheet: 19 of: 23	
File: P:\QUA_2475\Tester\HWSCH\ANA_IN_FE_B.SchDoc			

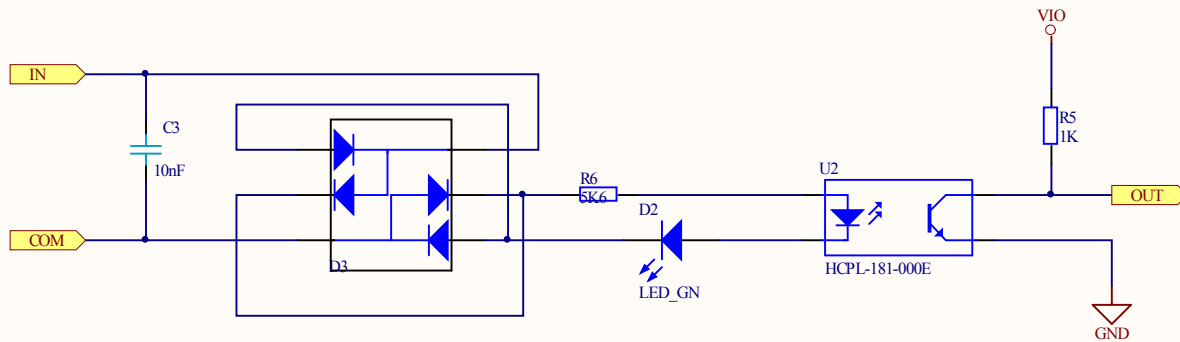




Cannot open file P:\PEZ_2710\HW\ALTUM\Aquarius\BMP\MKLogo.bmp		Title: *	
Drawn: *	Number: 21	Rev: *	
Checked: *	Date: 21-10-2008	Sheet: 21 of: 23	
File: P:\QUA_2475\Tester\HWSCH\ANA_IN_FE_D.SchDoc			



Cannot open file P:\PEZ_2710\HW\ALTUM\Aqariu s\BMP\MKLogo.bmp		Title: *	
Drawn: *	Number: 22	Rev: *	
Checked: *	Date: 21-10-2008	Sheet: 22 of: 23	
File: P:\QUA_2475\Tester\HWSCHANA_OUT_BE.SchDoc			



Cannot open file P:\PEZ_2710\HW\ALTUM\Aquariu s\BMP\MKLogo.bmp		Title: *	
Drawn: *	Number: 23	Rev: *	
Checked: *	Date: 21-10-2008	Sheet: 23 of: 23	
File: P:\QUA_2475\Tester\HWSCHDIGI_IN_FE.SchDoc			

Bill of Materials				Bill of Materials For Project [stimuliBoard.PrjPCB] (No PCB Document Sele	
Source Data From:				stimuliBoard.PrjPCB	
Project:				stimuliBoard.PrjPCB	
Variant:				None	
Creation Date: 21-10-2008				10:34:19	
Print Date: 39742				39742.44057	
Footprint	Comment	LibRef	Designator	Description	Quantity
C1210	Capacitor	Capacitor	C1, C8, C72, C78, C80, C83, C85, C110	Capacitor 1210	8
	Capacitor	Capacitor	C2, C4, C5, C6, C7, C8, C10, C11, C12, C13, C14, C16, C18, C17, C18, C1		117
C1210	P_CAP	P_CAP	C28, C21, C22, C23, C24, C25, C26, C2		
	P_CAP	P_CAP	C28, C28, C30, C31, C32, C33, C34, C3		
SOT23	BAT54S	BAT54S	C36, C37, C38, C39, C40, C41, C42, C4		
			C44, C45, C46, C47, C50, C51, C52, C		
0603	LED_RD	LED_RD	C55, C56, C57, C5		
SOT-23	BAS16	BAS16		SMD ELKO 1210	4
0603	LED_ON	LED_ON	C73, C77, C78	SMD ELKO	3
			D1, D2, D56, D57, D58, D59, D60, D61	Schottky Barrier Diode Common Anode e	4
SOT-23	LED_RD	LED_RD	D3, D4, D5, D6, D7, D8, D9, D10, D11,	Red LED 0603	15
			D12, D13, D14, D47, D48, D55		
0603	LED_ON	LED_ON	D15	Silicon Switching Diode for High-Speed	1
			D16, D18, D20, D22, D24, D26, D28, D3	Green LED 0603	22
SOT363	BAS40XY	BAS40XY	D32, D34, D38, D38, D40, D42, D44, D4		
			D46, D49, D62, D64, D60, D69		
CASE 403, 0	MBSR34073G	MBSR34073G	D17, D19, D21, D23, D25, D27, D28, D3	General-purpose Schottky diodes quadru	18
			D33, D35, D37, D39, D41, D43, D63, D6	2 series	
DO214	SMBJ03CA	SMBJ03CA	D67, D69		
	Diode BAS16	Diode BAS16	D50, D52	Surface Mount Schottky Power Rectifier	2
SOT-23	Diode BAS16	Diode BAS16	D51	Voltage suppression diode	1
			D53, D54	Silicon Switching Diode for High-Speed	2
53	MF-R135	Fuse 1	D57, D59	Switching	2
			F1, F2	MF-R Series - PTC Resettable Fuses.	2
D5LUB1.385,	D Connector 9	D Connector 9	F1	1A6000	
	24H	24H	F1	Receptacle Assembly, 9 Position, Right	1
SDAMB-012	SDAMB-	SDAMB-	F2	Angle	1
	012018T00	012018T00		90MMMC Card connector	1
L0603	BLM18G011N1	Inductor	L1, L2, L3, L4, L5, L6	Inductor	6
	BLM18G060N1	Inductor	L7, L8, L9, L10, L11, L12, L13, L14	Inductor	4
L0603	FB0805	Inductor	L15	Inductor	1
	FB0805	Inductor	L19	Inductor	1
TYCO_3631	3631-B-200-L	3631-B-200-L	L17	Surface Mount Power Inductor	1
	B	B			
CHOKE	ACM3225-601-	CHOKE_ACM3	L18	ACM3225-601-2P-T001	1
	SP-T001	25-601-SP-T001			
C1210	1u1, SMD	Inductor	L19	Inductor	1
	BLM18G121SN1	Inductor	L20	Inductor	1
L0603	BLM18T060N1	Inductor	L21, L22, L23, L24	Inductor	4
	BLM18T060N1	Inductor	L25, L26, L27, L28	Inductor	4
L0603	BLM18T0601T	Inductor	L29	Inductor	1
HEAD_18	Header_18	Header_18	P1	1x18 Pin row, Grid 2.54	1
	HEAD_PH_1	HEAD_PH_1	P2, P3, P10, P12	Header pitch: 5.08 mm, no. of positions: 1	1
HEAD_PH_1	HEAD_PH_1	HEAD_PH_1	P4, P6, P17	Header pitch: 5.08 mm, no. of positions: 1	3
HEAD_16	Header_16	Header_16	P5	1x16 Pin row, Grid 2.54	1
	HDR1X2	Header 2	P7, P9, P19	1x2Pin row, Grid 2.54, Header, 2-Pin	3
HDR1X3	Header 3	Header 3	P26	Header, 3-Pin	1
	HEAD_PH_4	HEAD_PH_4	P11, P13, P18	Header pitch: 5.08 mm, no. of positions: 4	3
RJ45_MHRJ45_transformed	RJ45_transformed	RJ45_transformed	P14	CONNECTOR WE-LAN INTEGRATED RJ45	1
	HEAD_PH_2	HEAD_PH_2	P16	Header pitch: 5.08 mm, no. of positions: 2	1
RJ45_MHRJ45_transformed	RJ45_transformed	RJ45_transformed	P20, P21	SOCKET RJ45	2
	HEAD_PH_2	HEAD_PH_2	P16	Header pitch: 5.08 mm, no. of positions: 2	1
RJ45_MHRJ45_transformed	RJ45_transformed	RJ45_transformed	P20, P21	SOCKET RJ45	2
	HEAD_PH_2	HEAD_PH_2	P16	Header pitch: 5.08 mm, no. of positions: 2	1
CRYSTAL_40	CRYSTAL_40	CRYSTAL_40	P21	CRYSTAL_40	1
	CRYSTAL_40	CRYSTAL_40	P21	CRYSTAL_40	1
CRYSTAL_40	CRYSTAL_40	CRYSTAL_40	P21	CRYSTAL_40	1
	CRYSTAL_40	CRYSTAL_40	P21	CRYSTAL_40	1
CRYSTAL_40	CRYSTAL_40	CRYSTAL_40	P21	CRYSTAL_40	1
	CRYSTAL_40	CRYSTAL_40	P21	CRYSTAL_40	1
CRYSTAL_40	CRYSTAL_40	CRYSTAL_40	P21	CRYSTAL_40	1
	CRYSTAL_40	CRYSTAL_40	P21	CRYSTAL_40	1
CRYSTAL_40	CRYSTAL_40	CRYSTAL_40	P21	CRYSTAL_40	1
	CRYSTAL_40	CRYSTAL_40	P21	CRYSTAL_40	1
CRYSTAL_40	CRYSTAL_40	CRYSTAL_40	P21	CRYSTAL_40	1
	CRYSTAL_40	CRYSTAL_40	P21	CRYSTAL_40	1
CRYSTAL_40	CRYSTAL_40	CRYSTAL_40	P21	CRYSTAL_40	1
	CRYSTAL_40	CRYSTAL_40	P21	CRYSTAL_40	1
CRYSTAL_40	CRYSTAL_40	CRYSTAL_40	P21	CRYSTAL_40	1
	CRYSTAL_40	CRYSTAL_40	P21	CRYSTAL_40	1
CRYSTAL_40	CRYSTAL_40	CRYSTAL_40	P21	CRYSTAL_40	1
	CRYSTAL_40	CRYSTAL_40	P21	CRYSTAL_40	1
CRYSTAL_40	CRYSTAL_40	CRYSTAL_40	P21	CRYSTAL_40	1
	CRYSTAL_40	CRYSTAL_40	P21	CRYSTAL_40	1
CRYSTAL_40	CRYSTAL_40	CRYSTAL_40	P21	CRYSTAL_40	1
	CRYSTAL_40	CRYSTAL_40	P21	CRYSTAL_40	1
CRYSTAL_40	CRYSTAL_40	CRYSTAL_40	P21	CRYSTAL_40	1
	CRYSTAL_40	CRYSTAL_40	P21	CRYSTAL_40	1
CRYSTAL_40	CRYSTAL_40	CRYSTAL_40	P21	CRYSTAL_40	1
	CRYSTAL_40	CRYSTAL_40	P21	CRYSTAL_40	1
CRYSTAL_40	CRYSTAL_40	CRYSTAL_40	P21	CRYSTAL_40	1
	CRYSTAL_40	CRYSTAL_40	P21	CRYSTAL_40	1
CRYSTAL_40	CRYSTAL_40	CRYSTAL_40	P21	CRYSTAL_40	1
	CRYSTAL_40	CRYSTAL_40	P21	CRYSTAL_40	1
CRYSTAL_40	CRYSTAL_40	CRYSTAL_40	P21	CRYSTAL_40	1
	CRYSTAL_40	CRYSTAL_40	P21	CRYSTAL_40	1
CRYSTAL_40	CRYSTAL_40	CRYSTAL_40	P21	CRYSTAL_40	1
	CRYSTAL_40	CRYSTAL_40	P21	CRYSTAL_40	1
CRYSTAL_40	CRYSTAL_40	CRYSTAL_40	P21	CRYSTAL_40	1
	CRYSTAL_40	CRYSTAL_40	P21	CRYSTAL_40	1
CRYSTAL_40	CRYSTAL_40	CRYSTAL_40	P21	CRYSTAL_40	1
	CRYSTAL_40	CRYSTAL_40	P21	CRYSTAL_40	1
CRYSTAL_40	CRYSTAL_40	CRYSTAL_40	P21	CRYSTAL_40	1
	CRYSTAL_40	CRYSTAL_40	P21	CRYSTAL_40	1
CRYSTAL_40	CRYSTAL_40	CRYSTAL_40	P21	CRYSTAL_40	1
	CRYSTAL_40	CRYSTAL_40	P21	CRYSTAL_40	1
CRYSTAL_40	CRYSTAL_40	CRYSTAL_40	P21	CRYSTAL_40	1
	CRYSTAL_40	CRYSTAL_40	P21	CRYSTAL_40	1
CRYSTAL_40	CRYSTAL_40	CRYSTAL_40	P21	CRYSTAL_40	1
	CRYSTAL_40	CRYSTAL_40	P21	CRYSTAL_40	1
CRYSTAL_40	CRYSTAL_40	CRYSTAL_40	P21	CRYSTAL_40	1
	CRYSTAL_40	CRYSTAL_40	P21	CRYSTAL_40	1
CRYSTAL_40	CRYSTAL_40	CRYSTAL_40	P21	CRYSTAL_40	1
	CRYSTAL_40	CRYSTAL_40	P21	CRYSTAL_40	1
CRYSTAL_40	CRYSTAL_40	CRYSTAL_40	P21	CRYSTAL_40	1
	CRYSTAL_40	CRYSTAL_40	P21	CRYSTAL_40	1
CRYSTAL_40	CRYSTAL_40	CRYSTAL_40	P21	CRYSTAL_40	1
	CRYSTAL_40	CRYSTAL_40	P21	CRYSTAL_40	1
CRYSTAL_40	CRYSTAL_40	CRYSTAL_40	P21	CRYSTAL_40	1
	CRYSTAL_40	CRYSTAL_40	P21	CRYSTAL_40	1
CRYSTAL_40	CRYSTAL_40	CRYSTAL_40	P21	CRYSTAL_40	1
	CRYSTAL_40	CRYSTAL_40	P21	CRYSTAL_40	1
CRYSTAL_40	CRYSTAL_40	CRYSTAL_40	P21	CRYSTAL_40	1
	CRYSTAL_40	CRYSTAL_40	P21	CRYSTAL_40	1
CRYSTAL_40	CRYSTAL_40	CRYSTAL_40	P21	CRYSTAL_40	1
	CRYSTAL_40	CRYSTAL_40	P21	CRYSTAL_40	1
CRYSTAL_40	CRYSTAL_40	CRYSTAL_40	P21	CRYSTAL_40	1
	CRYSTAL_40	CRYSTAL_40	P21	CRYSTAL_40	1
CRYSTAL_40	CRYSTAL_40	CRYSTAL_40	P21	CRYSTAL_40	1
	CRYSTAL_40	CRYSTAL_40	P21	CRYSTAL_40	1
CRYSTAL_40	CRYSTAL_40	CRYSTAL_40	P21	CRYSTAL_40	1
	CRYSTAL_40	CRYSTAL_40	P21	CRYSTAL_40	1
CRYSTAL_40	CRYSTAL_40	CRYSTAL_40	P21	CRYSTAL_40	1
	CRYSTAL_40	CRYSTAL_40	P21	CRYSTAL_40	1
CRYSTAL_40	CRYSTAL_40	CRYSTAL_40	P21	CRYSTAL_40	1
	CRYSTAL_40	CRYSTAL_40	P21	CRYSTAL_40	1
CRYSTAL_40	CRYSTAL_40	CRYSTAL_40	P21	CRYSTAL_40	1
	CRYSTAL_40	CRYSTAL_40	P21	CRYSTAL_40	1
CRYSTAL_40	CRYSTAL_40	CRYSTAL_40	P21	CRYSTAL_40	1
	CRYSTAL_40	CRYSTAL_40	P21	CRYSTAL_40	1
CRYSTAL_40	CRYSTAL_40	CRYSTAL_40	P21	CRYSTAL_40	1
	CRYSTAL_40	CRYSTAL_40	P21	CRYSTAL_40	1
CRYSTAL_40	CRYSTAL_40	CRYSTAL_40	P21	CRYSTAL_40	1
	CRYSTAL_40	CRYSTAL_40	P21	CRYSTAL_40	1
CRYSTAL_40	CRYSTAL_40	CRYSTAL_40	P21	CRYSTAL_40	1
	CRYSTAL_40	CRYSTAL_40	P21	CRYSTAL_40	1
CRYSTAL_40	CRYSTAL_40	CRYSTAL_40	P21	CRYSTAL_40	1
	CRYSTAL_40	CRYSTAL_40	P21	CRYSTAL_40	1
CRYSTAL_40	CRYSTAL_40	CRYSTAL_40	P21	CRYSTAL_40	1
	CRYSTAL_40	CRYSTAL_40	P21	CRYSTAL_40	1
CRYSTAL_40	CRYSTAL_40	CRYSTAL_40	P21	CRYSTAL_40	1
	CRYSTAL_40	CRYSTAL_40	P21	CRYSTAL_40	1
CRYSTAL_40	CRYSTAL_40	CRYSTAL_40	P21	CRYSTAL_40	1
	CRYSTAL_40	CRYSTAL_40	P21	CRYSTAL_40	1
CRYSTAL_40	CRYSTAL_40	CRYSTAL_40	P21	CRYSTAL_40	1
	CRYSTAL_40	CRYSTAL_40	P21	CRYSTAL_40	1
CRYSTAL_40	CRYSTAL_40	CRYSTAL_40	P21	CRYSTAL_40	1
	CRYSTAL_40	CRYSTAL_40	P21	CRYSTAL_40	1
CRYSTAL_40	CRYSTAL_40	CRYSTAL_40	P21	CRYSTAL_40	1
	CRYSTAL_40	CRYSTAL_40	P21	CRYSTAL_40	1
CRYSTAL_40	CRYSTAL_40	CRYSTAL_40	P21	CRYSTAL_40	1
	CRYSTAL_40	CRYSTAL_40	P21	CRYSTAL_40	1
CRYSTAL_40	CRYSTAL_40	CRYSTAL_40	P21	CRYSTAL_40	1
	CRYSTAL_40	CRYSTAL_40	P21	CRYSTAL_40	1
CRYSTAL_40	CRYSTAL_40	CRYSTAL_40	P21	CRYSTAL_40	1
	CRYSTAL_40	CRYSTAL_40	P21	CRYSTAL_40	1
CRYSTAL_40	CRYSTAL_40	CRYSTAL_40	P21	CRYSTAL_40	1
	CRYSTAL_40	CRYSTAL_40	P21	CRYSTAL_40	1
CRYSTAL_40	CRYSTAL_40	CRYSTAL_40	P21	CRYSTAL_40	1
	CRYSTAL_40	CRYSTAL_40	P21	CRYSTAL_40	1
CRYSTAL_40	CRYSTAL_40	CRYSTAL_40	P21	CRYSTAL_40	1
	CRYSTAL_40	CRYSTAL_40	P21	CRYSTAL_40	1
CRYSTAL_40	CRYSTAL_40	CRYSTAL_40	P21	CRYSTAL_40	1
	CRYSTAL_40	CRYSTAL_40	P21	CRYSTAL_40	1
CRYSTAL_40	CRYSTAL_40	CRYSTAL_40	P21	CRYSTAL_40	1
	CRYSTAL_40	CRYSTAL_40	P21	CRYSTAL_40	1
CRYSTAL_40	CRYSTAL_40	CRYSTAL_40	P21	CRYSTAL_40	1
	CRYSTAL_40	CRYSTAL_40	P21	CRYSTAL_40	1
CRYSTAL_40	CRYSTAL_40	CRYSTAL_40	P21	CRYSTAL_40	1
	CRYSTAL_40	CRYSTAL_40	P21	CRYSTAL_40	1
CRYSTAL_40	CRYSTAL_40	CRYSTAL_40	P21	CRYSTAL_40	1
	CRYSTAL_40	CRYSTAL_40	P21	CRYSTAL_40	1
CRYSTAL_40	CRYSTAL_40	CRYSTAL_40	P21	CRYSTAL_40	1
	CRYSTAL_40	CRYSTAL_40	P21	CRYSTAL_40	1
CRYSTAL_40	CRYSTAL_40	CRYSTAL_40	P21	CRYSTAL_40	1
	CRYSTAL_40	CRYSTAL_40	P21	CRYSTAL_40	1
CRYSTAL_40	CRYSTAL_40	CRYSTAL_40	P21	CRYSTAL_40	1
	CRYSTAL_40	CRYSTAL_40	P21	CRYSTAL_40	1
CRYSTAL_40	CRYSTAL_40	CRYSTAL_40	P21	CRYSTAL_40	1